

the RIVERBEND II *End*

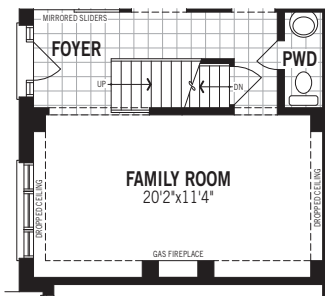
1894 Sq.Ft.

ELEV. 'D'

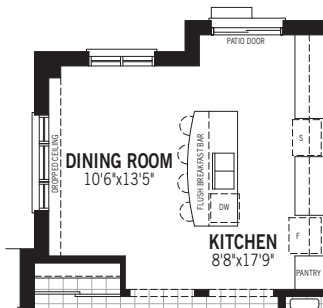


ARCHITECT'S CHOICE OPTIONS GROUND FLOOR OPTIONS

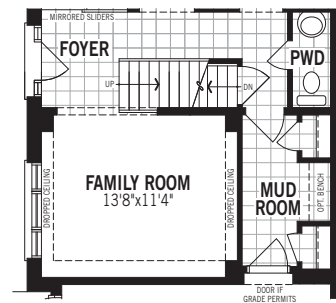
1 Gas Fireplace

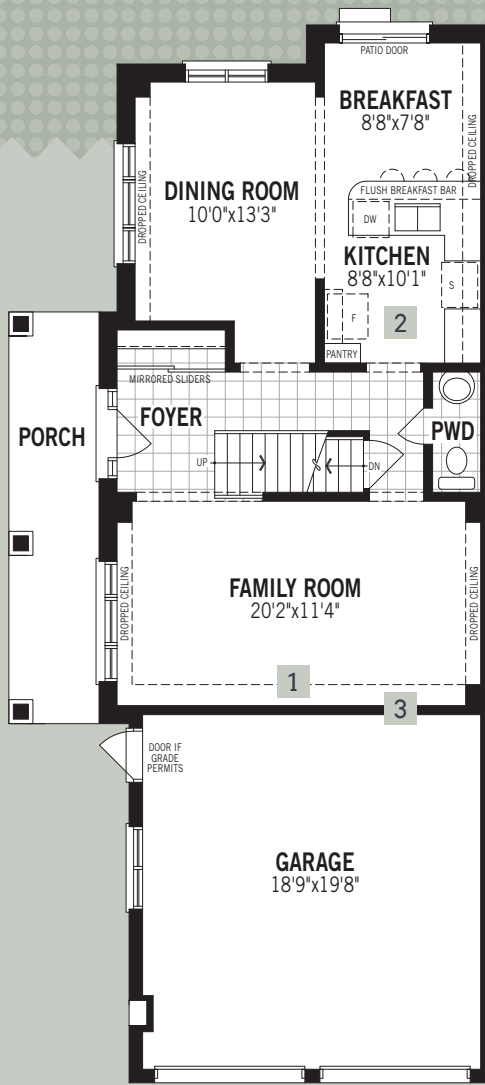


2 Chef's Kitchen

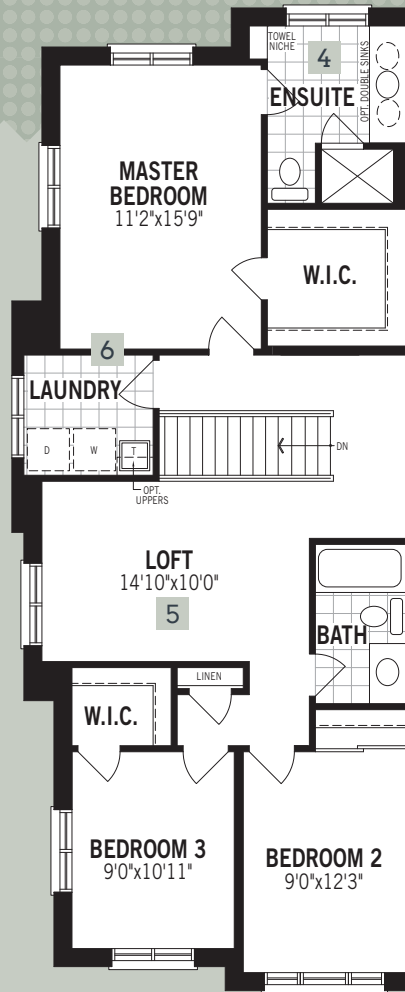


3 Mud Room
(Where Grade Permits)

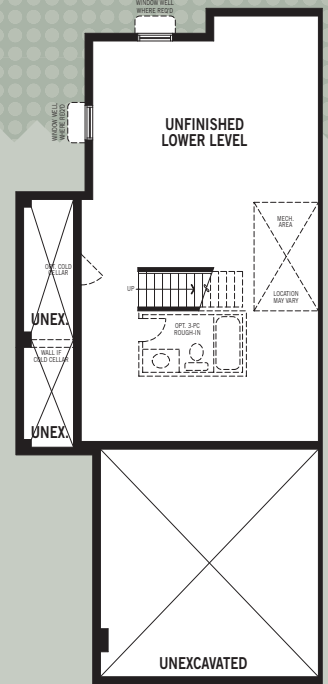




GROUND FLOOR PLAN



SECOND FLOOR PLAN



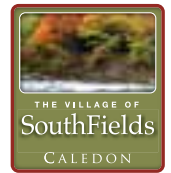
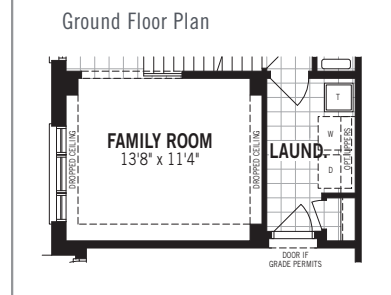
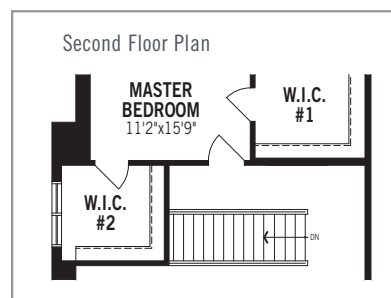
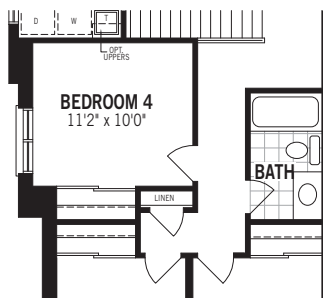
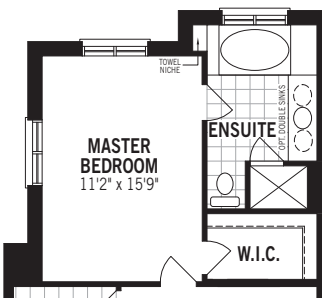
BASEMENT PLAN

ARCHITECT'S CHOICE OPTIONS
SECOND FLOOR OPTIONS

4 Bath Oasis

5 Bedroom 4 In Lieu Of Loft

6 Dual Walk-In Closets
(Laundry Relocated To Ground Floor)



Additional Architect's Choice Options Available for this Home:

Basement Choices

Cold Cellar

- Partial area under the front porch specific to the elevation purchased
- Insulated door, overhead light, floor drain and vent

Rec. Room Ready Package

- Rough-in drains in predetermined location for future 3-pc bathroom
- Deeper basement windows (where applicable)

THAF

All illustrations are artist's concept. Specifications, terms and conditions are subject to change without notice. These floor plans and room dimensions apply to elevation 'D' of this model type. Note that plans and room dimensions may vary according to elevation. Plan may be built as the mirror image. "Quiet wall" (where shown) means a wall in which additional insulation has been installed. This will assist in reducing, but not eliminating, ambient sound from adjoining rooms and mechanical systems. The extent of the reduction will vary depending upon various factors including, without limitation, the presence and extent of mechanical systems located in the wall. Please consult your sales representative. E & O. E. August 2015 - Copyright 2015 - Mattamy Homes Limited.